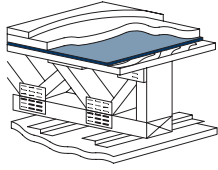




# STC/IIC Ratings and UL Listings

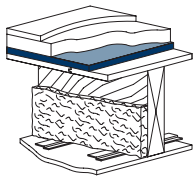
## Open Web



Sound Control Mat	Gypsum Concrete Thickness	Insulation	Truss Depth	Ceiling Isolation	Bare	2mm Vinyl Sheet	2mm Vinyl Plank	3mm Vinyl Tile	13mm Eng. Wood	8mm Ceram. Tile
FIRM-FILL® SCM 125	3/4" (19mm)	3-1/2" (89mm) R-13 Fiberglass	18" (457mm)	Clark Dietrich RCSD	STC - 59 IIC - n/a	STC - 58 IIC - 51	STC - 60 IIC - 51	STC - 61 IIC - 53	STC - 59 IIC - 57	—
FIRM-FILL® SCM 250	1" (25mm)	3-1/2" (89mm) R-13 Fiberglass	18" (457mm)	Clark Dietrich RCSD	STC - 60 IIC - 50	STC - 61 IIC - 54	STC - 62 IIC - 53	STC - 61 IIC - 53	STC - 61 IIC - 57	STC - 60 IIC - 57
FIRM-FILL® SCM 250	1" (25mm)	3-1/2" (89mm) R-13 Fiberglass	18" (457mm)	PAC Int. RSICC-1 Hat	STC - 62 IIC - 53	STC - 62 IIC - 56	STC - 62 IIC - 56	STC - 62 IIC - 56	STC - 62 IIC - 60	STC - 61 IIC - 57
FIRM-FILL® SCM 400	1-1/4" (32mm)	3-1/2" (89mm) R-13 Fiberglass	18" (457mm)	Clark Dietrich RCSD	STC - 61 IIC - 50	STC - 62 IIC - 53	STC - 62 IIC - 53	STC - 62 IIC - 54	STC - 61 IIC - 58	STC - 61 IIC - n/a

UL: L521, L528, L529, L534, L542, L546, L550, L558, L562, L563, L574, L576, L577, L579, L583, L585, L587, L592, M500, M503, M508

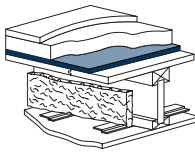
## Nominal Wood



FIRM-FILL® SCM 125	3/4" (19mm)	3-1/2" (89mm) R-13 Fiberglass	9-1/4" (235mm)	Clark Dietrich RCSD	STC - 59 IIC - n/a	STC - 59 IIC - 53	STC - 61 IIC - 50	STC - 61 IIC - 52	STC - 61 IIC - 54	STC - 61 IIC - 51
FIRM-FILL® SCM 250	1" (25mm)	3-1/2" (89mm) R-13 Fiberglass	9-1/4" (235mm)	Clark Dietrich RCSD	STC - 59 IIC - n/a	STC - 59 IIC - 51	STC - 59 IIC - 50	STC - 60 IIC - 50	STC - 60 IIC - 54	STC - 60 IIC - 51
FIRM-FILL® SCM 400	1-1/4" (32mm)	3-1/2" (89mm) R-13 Fiberglass	9-1/4" (235mm)	Clark Dietrich RCSD	STC - 59 IIC - n/a	STC - 60 IIC - 53	STC - 61 IIC - 52	STC - 61 IIC - 53	STC - 59 IIC - 57	STC - 59 IIC - 51

UL: L006, L201, L202, L206, L208, L209, L210, L211, L212, L501, L502, L503, L504, L505, L506, L507, L508, L509, L510, L511, L512, L513, L514, L515, L516, L517, L519, L520, L522, L523, L525, L5226, L533, L535, L536, L537, L539, L540, L541, L545, L556, L557, L569, L581, L583, L588, L590, L593, L598, LM504, M519

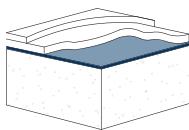
## I-Joist



FIRM-FILL® SCM 125	3/4" (19mm)	3-1/2" (89mm) R-13 Fiberglass	12" (302mm)	Clark Dietrich RCSD	STC - 60 IIC - n/a	STC - 61 IIC - 54	STC - 61 IIC - 53	STC - 62 IIC - 51	STC - 61 IIC - 59	STC - 61 IIC - n/a
FIRM-FILL® SCM 250	1" (25mm)	3-1/2" (89mm) R-13 Fiberglass	12" (302mm)	Clark Dietrich RCSD	STC - 58 IIC - n/a	STC - 59 IIC - 54	STC - 61 IIC - 52	STC - 62 IIC - 52	—	—
FIRM-FILL® SCM 250	1" (25mm)	3-1/2" (89mm) R-13 Fiberglass	12" (302mm)	PAC Int. RSICC-1 Hat	STC - 62 IIC - 52	STC - 62 IIC - 57	STC - 63 IIC - 57	STC - 63 IIC - 56	STC - 62 IIC - 61	STC - 63 IIC - 51
FIRM-FILL® SCM 400	1-1/4" (32mm)	3-1/2" (89mm) R-13 Fiberglass	12" (302mm)	Clark Dietrich RCSD	STC - 61 IIC - 51	STC - 61 IIC - 54	STC - 62 IIC - 54	STC - 62 IIC - 58	STC - 62 IIC - 54	STC - 61 IIC - 55

UL: L518, L530, L538, L547, L556, L570, L571, L581, L583, L589, M502, M506, M512

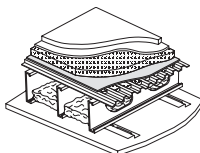
## Concrete



FIRM-FILL® SCM 125	3/4" (19mm)	None	6" (152mm)	None	STC - 51 IIC - Δ 20	—	—	—	—	—
FIRM-FILL® SCM 250	1" (25mm)	None	6" (152mm)	None	STC - 51 IIC - Δ 20	—	—	—	—	—
FIRM-FILL® SCM 400	1-1/4" (32mm)	None	6" (152mm)	None	STC - 52 IIC - Δ 23	STC - n/a IIC - 50	—	—	—	—

UL: J917, J919, J920, J924, J927, J931, J957, J991, J994

## Steel Deck



13mm Quarry Tile Flooring over 10mm QT4010										
Hacker Sound Mat II	1" (25mm)	3-1/2" (89mm) R-13 Fiberglass	14mm Deep 22msg CMD	Clark Dietrich RCSD	—	STC - 61 IIC - 58	—	—	—	—

UL: G230, G516, G524, G533, G561, G565, G566, G568, G587, G594, 595